

CO₂ sensor Model A2G-85

WIKA data sheet SP 69.07



Applications

- For the detection of carbon dioxide (CO₂), temperature and relative humidity (optionally) in living, office and production spaces, assembly rooms, rooms for large gatherings, etc.
- For the CO₂ measurement the "Non Dispersive InfraRed (NDIR)" technology with automatic self-calibration is used

Special features

- Simple mounting
- Maintenance-free
- Compact and robust design
- Incl. mounting flange (supplied)



CO₂ sensor model A2G-85

Description

Wherever people are staying in rooms, the CO₂ concentration is an evident indicator for the room quality. The higher the CO₂ content, the worse the air quality.

Design

Per 2004/108/EC Electromagnetic compatibility

Product safety: 2001/95/EC Product safety

EMC: EN 60730-1:2002

Product safety: EN 60730-1:2002

Analogue outputs

0 ... 10 V, analogue output max. 10 mA

Temperature dependency

< 0.2 % of the full scale value per °C

Accuracy

typically ±40 ppm + 4 % of the measured value

Permissible temperature

Ambient: 0 ... +50 °C

Operation: 0 ... +50 °C, max. 85 % rH, non-condensing

Ingress protection

IP 20 per EN 60529 / IEC 529

Weight

approx. 1.3 kg

Standard version

CO₂ sensor

0 ... 2,000 ppm

Sensor functional principle: NDIR (non dispersive infrared)

Housing

Connection head: PC, 120 x 120 x 85 mm, with cover (crystal-clear)

Sensor tube: Steel, galvanised, length 300 mm, Ø 30 mm, incl. mounting flange

Electrical connection

Cable gland M16

Screw terminals, max. 1.5 mm²

Supply voltage

DC 15 ... 24 V (±10 %) or AC 24 V (±10 %) safety extra-low voltage (SELV)

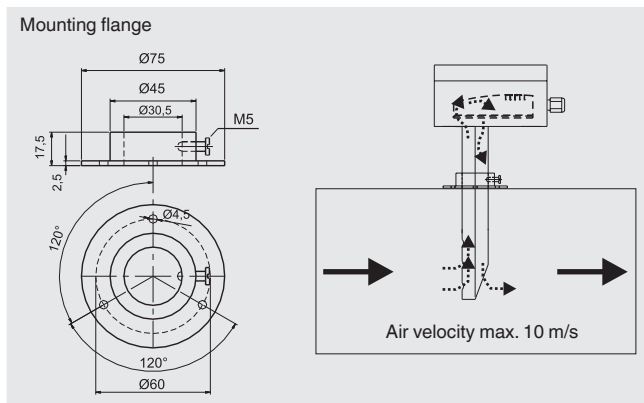
Power consumption

max. 3 W / max. 6 VA

Installation instructions

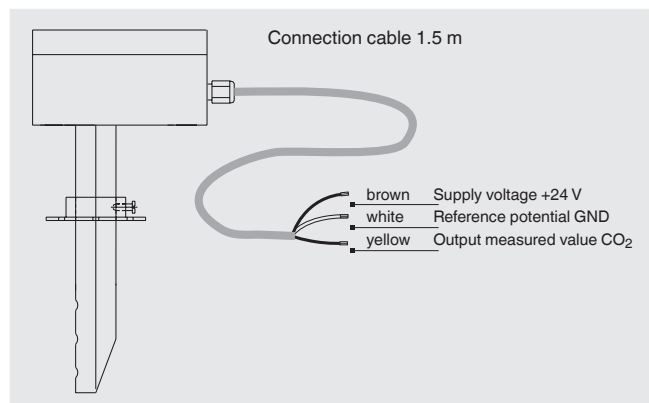
The instruments are supplied in an operational status. The instrument is already equipped with a 1.5 m long connection cable and there is no need to open it. If an opening of the cover becomes necessary, make sure that the case is hermetically sealed again afterwards.

The mounting to the ventilation duct is made by means of the flange included (mounting screws are not included in the delivery).

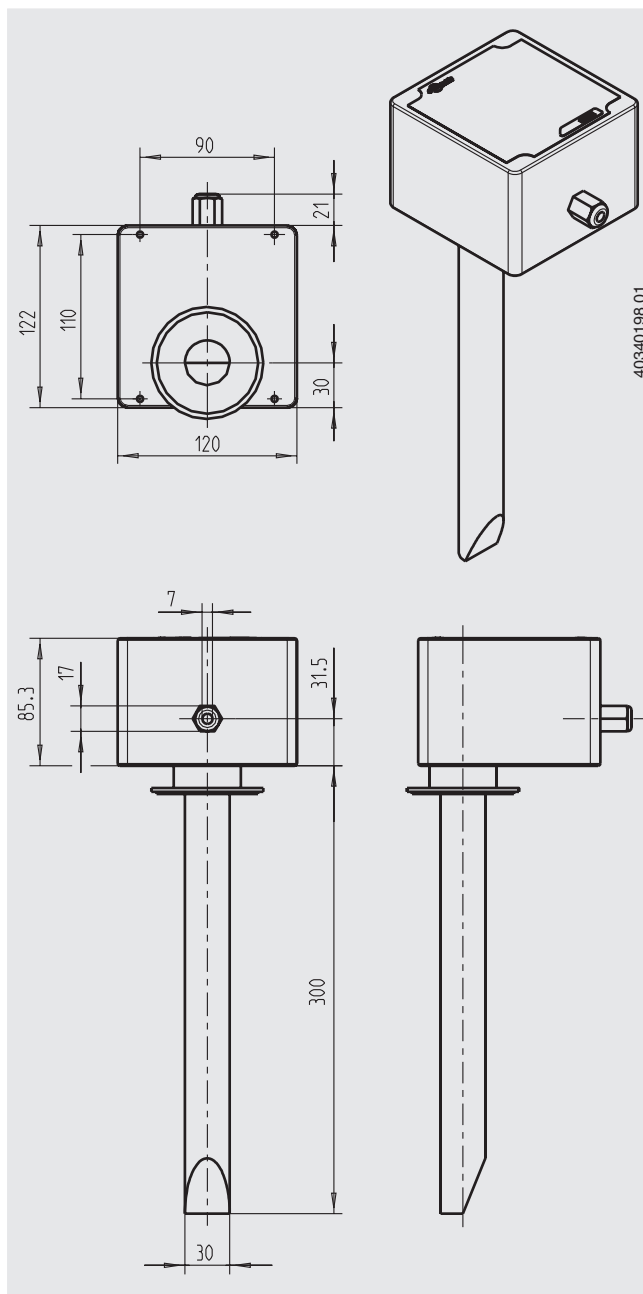


Options

- LC display for indicating the measured values and parameter settings
- 3 LEDs for displaying the CO₂ content
 - 0 ... 750 ppm: Green LED is on = good
 - 751 ... 1,250 ppm: Yellow LED is on = moderate
 - 1,251 ... 2,000 ppm: Red LED is on = poor



Dimensions in mm



Ordering information

Model / Options

© 2011 WIKA Alexander Wiegand SE & Co. KG, all rights reserved.
The specifications given in this document represent the state of engineering at the time of publishing.
We reserve the right to make modifications to the specifications and materials.

