

Air velocity transmitter Model A2G-20

WIKA data sheet SP 69.06

air2guide

Applications

- For measuring air velocity and temperature in gaseous media of
 - heating,
 - ventilation and
 - air-conditioning systems (e.g. fresh air/exhaust air ducts)
- Designed for locking on to control and display systems

Special features

- Simple mounting
- High reliability
- Three measuring ranges for air velocity settable at the instrument via jumpers
- Two output signals in one instrument
- Incl. mounting flange

Description

Design

EMC directive: 2004/108/EC
 RoHS directive: 2002/95/EC
 Low voltage directive: 2006/95/EC
 WEEE directive: 2002/96/EC

Measuring ranges

Air velocity:
 Measuring range 0 ... 2 m/s, 0 ... 10 m/s and 0 ... 20 m/s
 (settable at the instrument via jumpers)
 Temperature: 0 ... 50 °C

Accuracy

Air velocity:
 Measuring range 0 ... 2 m/s: < 0.1 m/s +5 % of measured value
 Measuring range 0 ... 10 m/s: < 0.5 m/s +5 % of measured value
 Measuring range 0 ... 20 m/s: < 1.0 m/s +5 % of measured value
 Temperature:
 < 0.5 °C (v > 0.5 m/s)

Air velocity transmitter model A2G-20



Operating temperature

Ambient: 0 ... +50 °C
 Storage: -20 ... +70 °C
 Operation: 0 ... +50 °C, max. 85 % rH

Ingress protection

IP 54 per EN 60529 / IEC 529

Standard version

Measuring element

Pt1000 and NTC10k

Case

Plastic (ABS)

Electrical connection

Cable gland M16

Screw terminals, max. 1.5 mm²

Output signal

Air velocity:

0 ... 10 V (linear to m/s), load min. 1 kOhm or

4 ... 20 mA (linear to m/s), load max. 400 Ohm

Temperature:

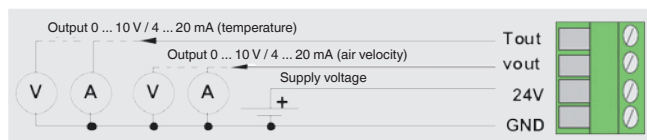
0 ... 10 V (linear to °C), load min. 1 kOhm or

4 ... 20 mA (linear to °C), load max. 400 Ohm

Supply voltage

AC/DC 24 V ±10 %

Connection diagram

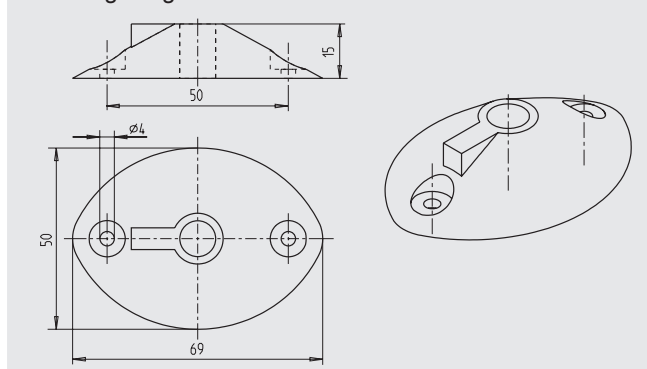


Type of mounting

Duct installation

Standard accessories

Mounting flange



Ordering information

Model / Options

© 2011 WIKA Alexander Wiegand SE & Co. KG, all rights reserved.

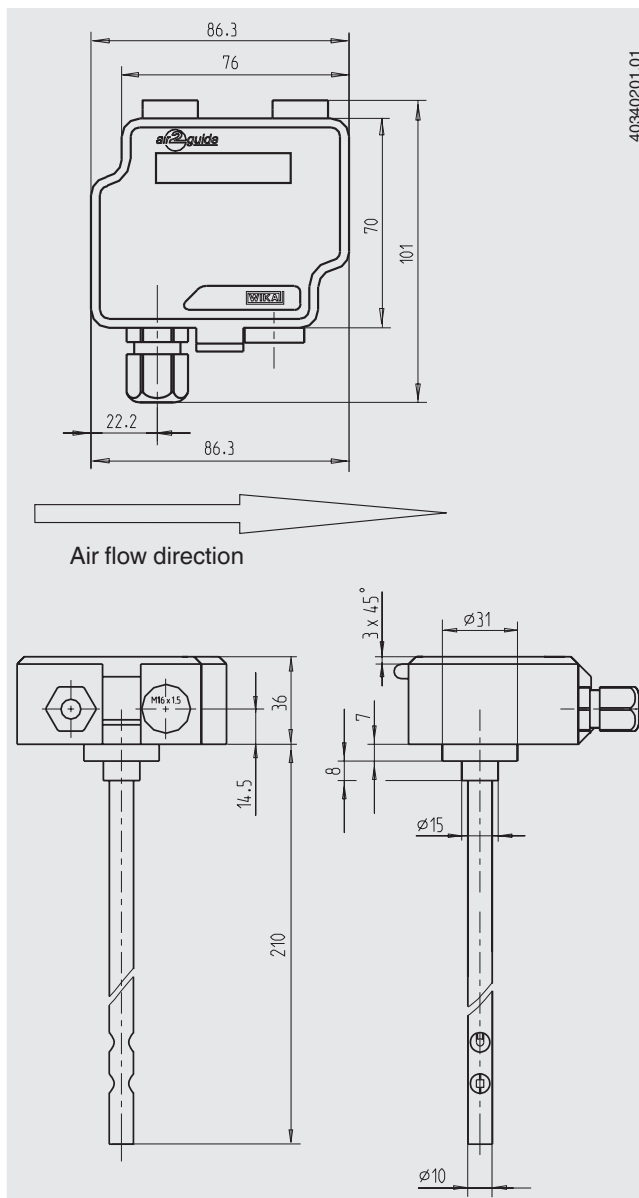
The specifications given in this document represent the state of engineering at the time of publishing.

We reserve the right to make modifications to the specifications and materials.

Options

- LC display for measured value display
- LC display for measured value display and relay (potential-free, change-over contact, max. AC 250 V, 6 A, DC 30 V, 6 A, adjustable switch point and hysteresis)

Dimensions in mm



WIKAL Alexander Wiegand SE & Co. KG
Alexander-Wiegand-Straße 30
63911 Klingenberg/Germany
Tel. (+49) 9372/132-0
Fax (+49) 9372/132-406
E-mail info@wika.de
www.wika.de