

Monoflange Manifold Valve

Purpose

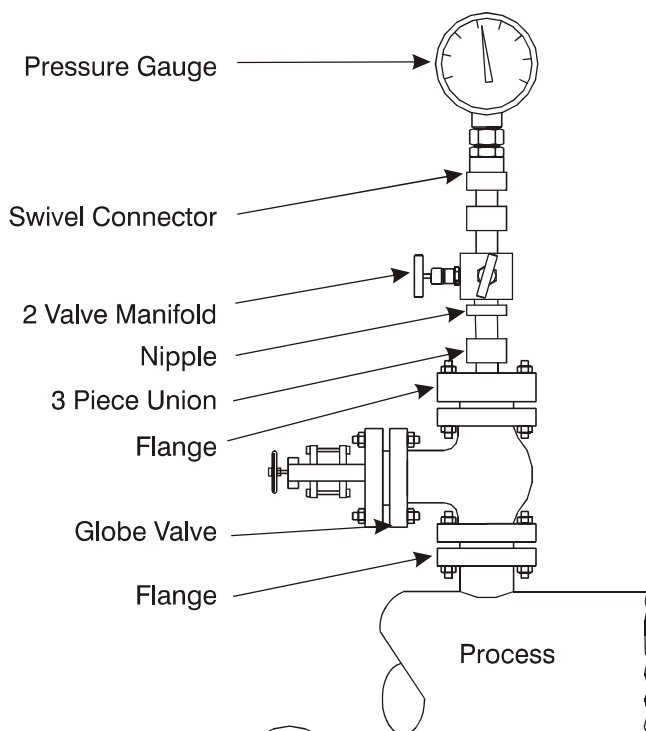
ASTEC monoflange valves are used for Isolation in Liquid, Gas & Process Lines. These are designed to replace traditional multiple valve installation currently in used and for the reduction in space, weight and cost saving.

Features :

- Direct Flange mounting reduce overall height and Vibration
- Reduced No of joints reduces potential leak path
- Horizontal & vertical Installation
- Single piece, compact design reduction in weight and space requirement.
- Reduced Installation and maintenance cost.
- Wide range of Instrument and process connection.
- Flange Connections Confirming to ANSI B16.5 (DIN Standard optional)

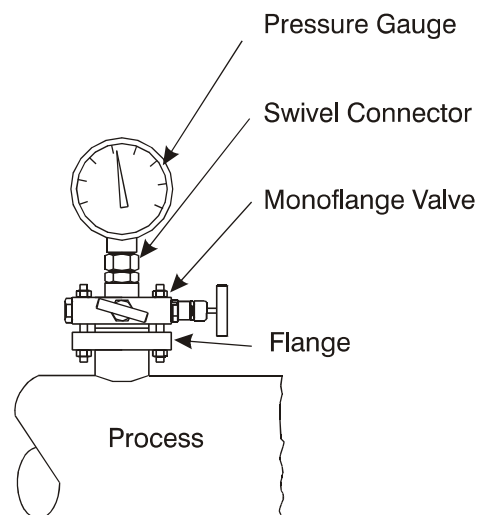


Your Trouble

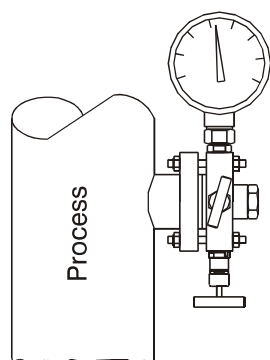


Traditional Method

Our Solution



Horizontal



Vertical

Technical Details

$\frac{1}{2}$ " to 2" N.B Flanges (15 to 50 DN).
 ANSI B 16.5 / B1560 Part 2. Flanges of 150 to 2500 class
 Standard outlet connection $\frac{1}{2}$ " NPT(F).
 Standard Vent connection $\frac{1}{2}$ " NPT(F).
 Raise Face and Ring type joint Flange face.
 One piece construction.
 Material traceability as per EN 10204. 3.1.B

Single Isolation
Monoflange Valve

MFV-SI



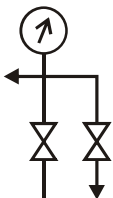
Double Isolation
Monoflange Valve

MFV-II



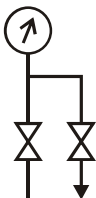
Isolation & Drain
Monoflange Valve

MFV-IDV



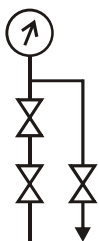
Isolation & Drain
Monoflange Valve

MFV-ID



Double Isolation & Drain
Monoflange Valve

MFV-IID



Double Isolation & Drain
Monoflange Valve

MFV-IDI

